

FOR LEASE

5600 SW 36th St Suite B Oklahoma City, OK 73179



- TOTAL SIZE 40,249 SF
- OFFICE SIZE 6,815 SF
- CLEAR HEIGHT 24'
- BAY DEPTH 209' 1"
- COLUMN SPACING 36' 5"
- DOCK DOORS 5
- RAMPS 1
- 480 VOLT/3 PHASE/400 AMPS
- NEWLY REMODELED OFFICE
- NEGOTIABLE RATE

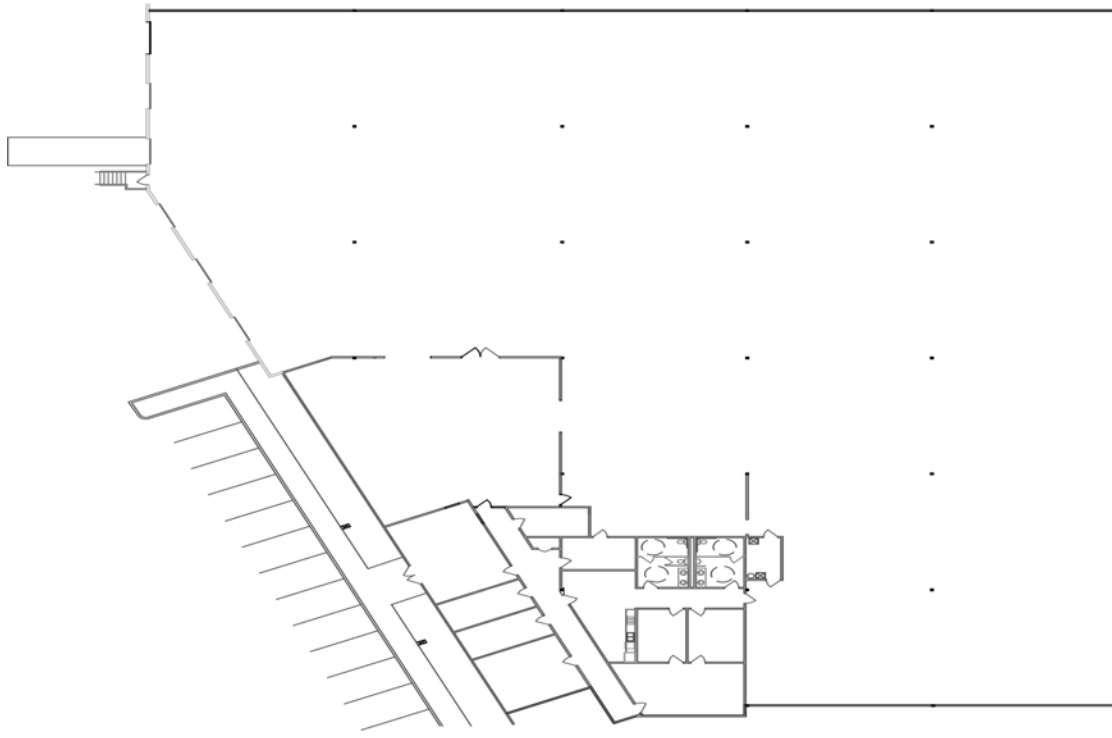
HORIZON COMMERCIAL REAL ESTATE

DAVID PORTMAN, CCIM
PRINCIPAL

405.850.1107
david.portman@horizoncreok.com

FOR LEASE

5600 SW 36th St Suite B Oklahoma City, OK 73179



FEATURES:
DOCK DOORS: 6
RAMP DOOR: 1
CLEAR HEIGHT:
PARKING RATIO:
COLUMN SPACING: 36'-5"
BAY DEPTH: 209'-1"

HORIZON COMMERCIAL REAL ESTATE

DAVID PORTMAN, CCIM
PRINCIPAL

405.850.1107
david.portman@horizoncreok.com

FOR LEASE

**5600 SW 36th St Suite B
Oklahoma City, OK 73179**



HORIZON COMMERCIAL REAL ESTATE

**DAVID PORTMAN, CCIM
PRINCIPAL**

405.850.1107

david.portman@horizoncreok.com

