

FOR LEASE

**4301 Will Rogers Parkway Suite 1000
Oklahoma City, OK 73108**



- TOTAL SIZE 3,218 SF
- OFFICE SIZE 1,366 SF
- CLEAR HEIGHT 14'
- BAY DEPTH 100' 3"
- COLUMN SPACING 30' 2"
- GRADE LEVEL DOORS 1
- 100% CLIMATE CONTROLLED
- POWER 120V/3 PHASE/400 AMPS
- NEW LED LIGHTING
- RENTAL RATE \$7.75/SF

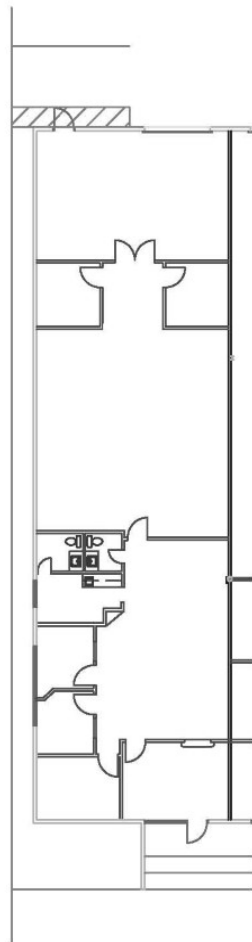
HORIZON COMMERCIAL REAL ESTATE

**DAVID PORTMAN, CCIM
PRINCIPAL**

**405.850.1107
david.portman@horizoncreok.com**

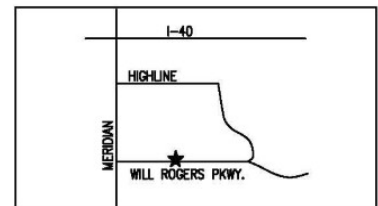
FOR LEASE

4301 Will Rogers Parkway Suite 1000 Oklahoma City, OK 73108

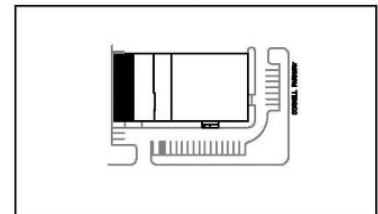


METRO BP II

4301 WILL ROGERS PKWY. #1000
OKLAHOMA CITY, OKLAHOMA 73108



LOCATION MAP, NTS



KEY PLAN, NTS

OFFICE:	1,366 SF
WAREHOUSE:	1,852 SF
TOTAL:	3,218 SF

FEATURES:
DOCK DOORS: 1
CLEAR HEIGHT:
PARKING RATIO:
COLUMN SPACING: 30'-2"
BAY DEPTH: 103'-11"

20' 0 10' 20'



SCALE: 1"=20' 3/09

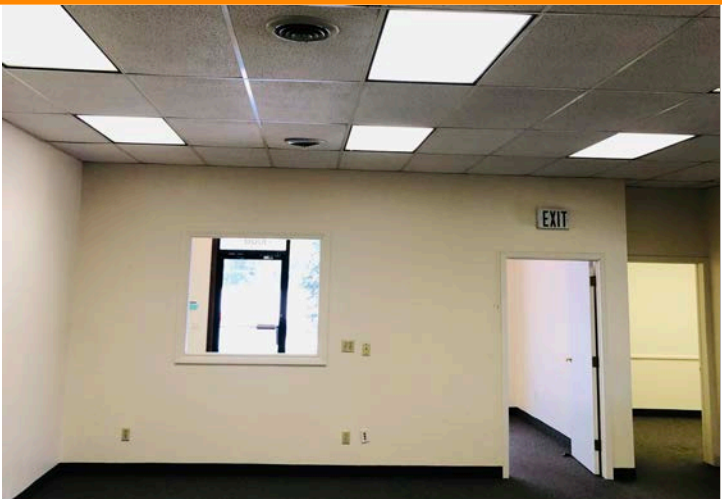
HORIZON COMMERCIAL REAL ESTATE

DAVID PORTMAN, CCIM
PRINCIPAL

405.850.1107
david.portman@horizoncreok.com

FOR LEASE

**4301 Will Rogers Parkway Suite 1000
Oklahoma City, OK 73108**



HORIZON COMMERCIAL REAL ESTATE

**DAVID PORTMAN, CCIM
PRINCIPAL**

**405.850.1107
david.portman@horizoncreok.com**

