

FOR LEASE

4100 Will Rogers Parkway Suite 700 Oklahoma City, OK 73108



- TOTAL SIZE 5,390 SF
- OFFICE SIZE 1,308 SF
- CLEAR HEIGHT 18'
- BAY DEPTH 138' 10"
- COLUMN SPACING 38' 6"
- DOCK DOORS 1
- RAMPS 1
- 100% CLIMATE CONTROLLED
- NEWLY REMODELED SPACE
- NEGOTIABLE RATE

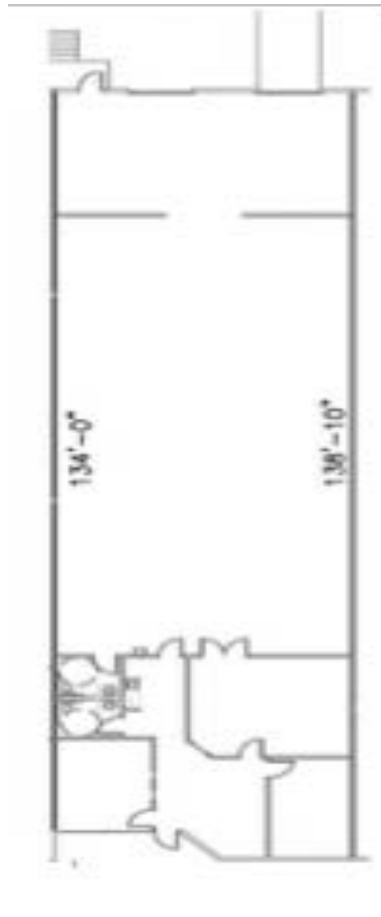
HORIZON COMMERCIAL REAL ESTATE

DAVID PORTMAN, CCIM
PRINCIPAL

405.850.1107
david.portman@horizoncreok.com

FOR LEASE

4100 Will Rogers Parkway Suite 700 Oklahoma City, OK 73108



HORIZON COMMERCIAL REAL ESTATE

DAVID PORTMAN, CCIM
PRINCIPAL

405.850.1107
david.portman@horizoncreok.com

FOR LEASE

4100 Will Rogers Parkway Suite 700 Oklahoma City, OK 73108



HORIZON COMMERCIAL REAL ESTATE

**DAVID PORTMAN, CCIM
PRINCIPAL**

**405.850.1107
david.portman@horizoncreok.com**