

FOR LEASE

3714 South Harmon Avenue Oklahoma City, OK 73179



- TOTAL SIZE 14,707 SF
- OFFICE SIZE 2,332 SF
- CLEAR HEIGHT 24'
- BAY DEPTH 188' 9"
- COLUMN SPACING 36'
- DOCK DOORS 3
- DRIVE-IN BAYS 1
- POWER 480V/3 PHASE/600 AMPS
- LED WAREHOUSE LIGHTING
- RENTAL RATE \$4.50/SF/YR

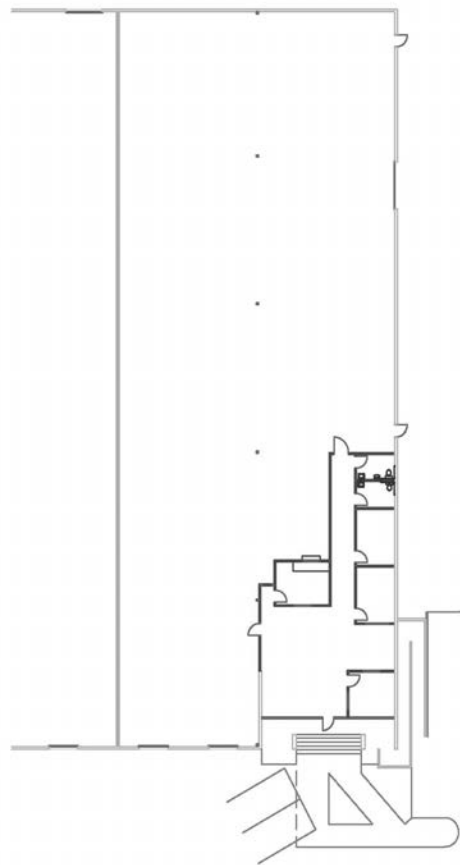
HORIZON COMMERCIAL REAL ESTATE

DAVID PORTMAN, CCIM
PRINCIPAL

405.850.1107
david.portman@horizoncreok.com

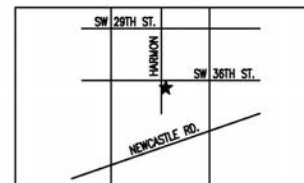
FOR LEASE

3714 South Harmon Avenue Oklahoma City, OK 73179

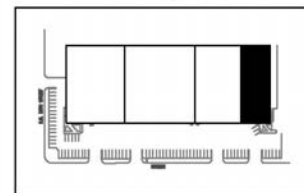


SW DIST. CENTER II

3714 S. HARMON OKLAHOMA CITY,
OKLAHOMA 73179



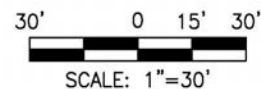
LOCATION MAP, NTS



KEY PLAN, NTS

OFFICE:	2,332 SF
WAREHOUSE:	12,375 SF
TOTAL:	14,707 SF

<u>FEATURES:</u>	
DOCK DOORS:	3
CLEAR HEIGHT:	
PARKING RATIO:	
COLUMN SPACING:	36'-0"
BAY DEPTH:	188'-9"



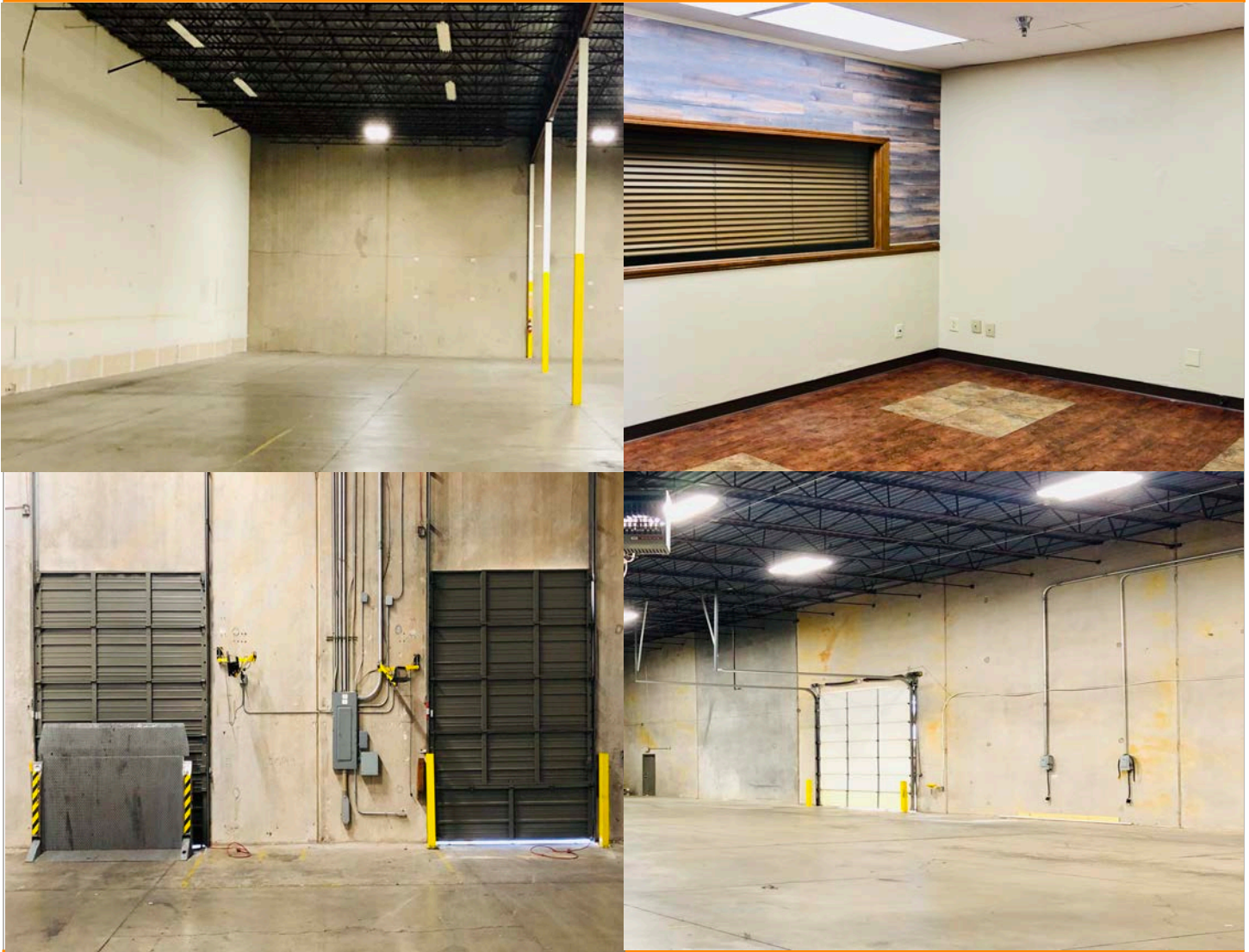
HORIZON COMMERCIAL REAL ESTATE

DAVID PORTMAN, CCIM
PRINCIPAL

405.850.1107
david.portman@horizoncreok.com

FOR LEASE

3714 South Harmon Avenue Oklahoma City, OK 73179



HORIZON COMMERCIAL REAL ESTATE

DAVID PORTMAN, CCIM
PRINCIPAL

405.850.1107

david.portman@horizoncreok.com

