

FOR LEASE

1398 Metropolitan Avenue Oklahoma City, OK 73108



- TOTAL SIZE 24,626 SF
- OFFICE SIZE 2,295 SF
- CLEAR HEIGHT 22'
- BAY DEPTH 163' 9"
- COLUMN SPACING 30'
- 5 DOCK-HIGH DOORS
- 1 DRIVE-IN DOOR
- POWER 480V/3 PHASE/600 AMPS
- NEWLY REMODELED SPACE
- RENTAL RATE \$4.50/SF/NNN

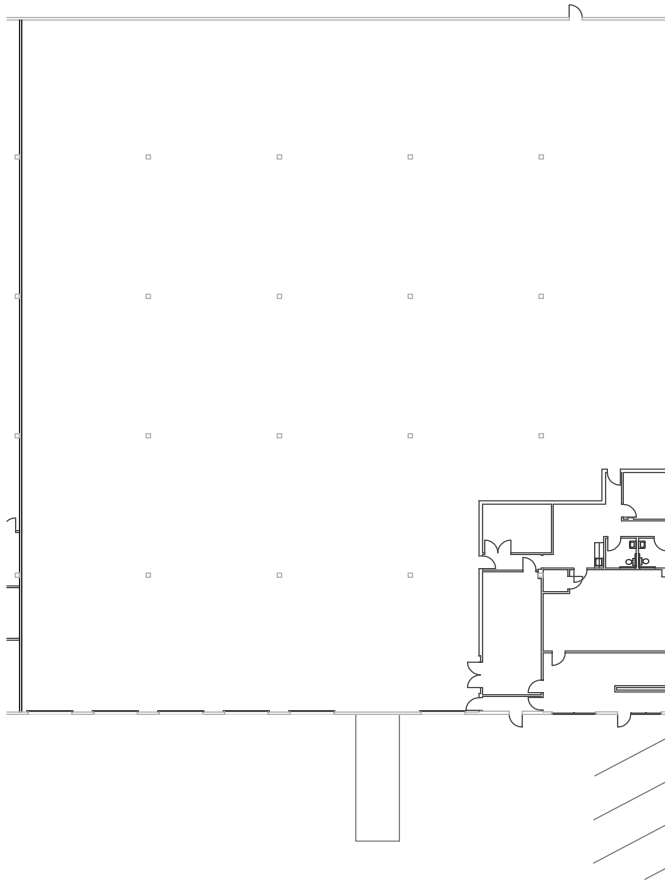
HORIZON COMMERCIAL REAL ESTATE

DAVID PORTMAN, CCIM
PRINCIPAL

405.850.1107
david.portman@horizoncreok.com

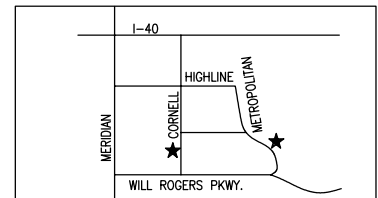
FOR LEASE

1398 Metropolitan Avenue Oklahoma City, OK 73108

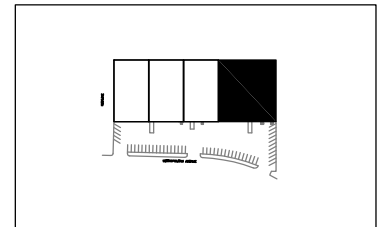


METRO BP II

1330-1398 METROPOLITAN, #1398
OKLAHOMA CITY, OKLAHOMA 73108



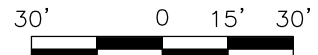
LOCATION MAP, NTS



KEY PLAN, NTS

OFFICE: 2,295 SF
WAREHOUSE: 22,331 SF
TOTAL: 24,626 SF

FEATURES:
DOCK DOORS: 6
CLEAR HEIGHT:
PARKING RATIO:
COLUMN SPACING: 30'-0"
BAY DEPTH: 163'-9"



SCALE: 1"=30'

11/19

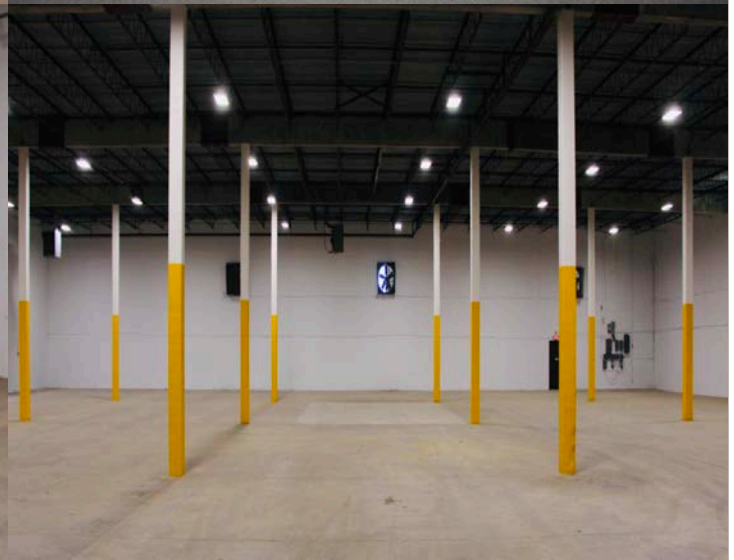
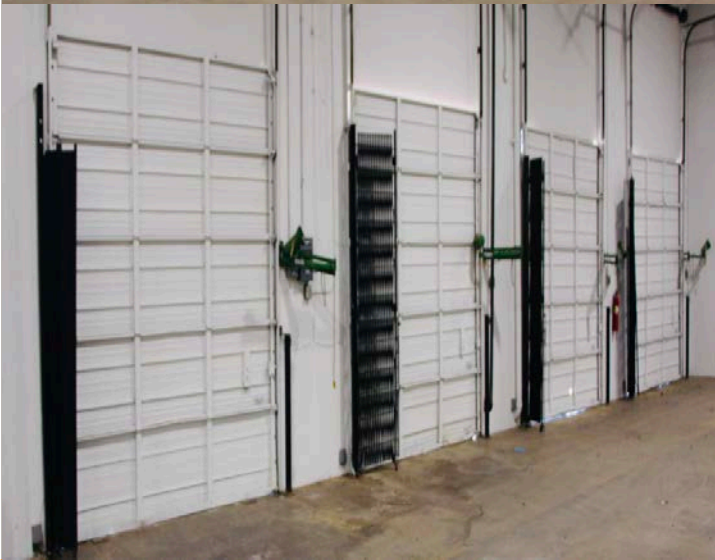
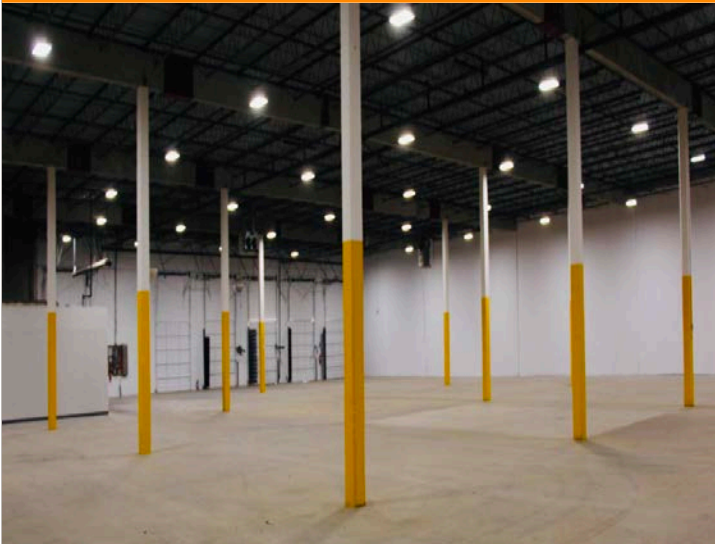
HORIZON COMMERCIAL REAL ESTATE

DAVID PORTMAN, CCIM
PRINCIPAL

405.850.1107
david.portman@horizoncreok.com

FOR LEASE

1398 Metropolitan Avenue Oklahoma City, OK 73108



HORIZON COMMERCIAL REAL ESTATE

DAVID PORTMAN, CCIM
PRINCIPAL

405.850.1107
david.portman@horizoncreok.com

